



Product Service

CERTIFICATE

No. Z2 16 03 56640 165

Holder of Certificate:

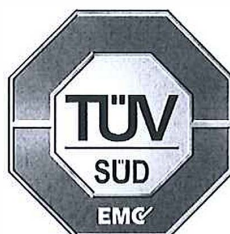
Person scales
Electronic personal scales
Model: EB1001, EB1002, EB1003, EB1004
EB1004H, EB3571S, EB3571W, EB5001, etc.
(See page 2-6 for models details)

Production
Facility(ies):

56640



Certification Mark:



Product:

Person scales
(Electronic personal scales)

Model(s):

EB1001, EB1002, EB1003, EB1004
EB1004H, EB3571S, EB3571W, EB5001, etc.
(See page 2-6 for models details)

Parameters:

Rated voltage:
Protection class:

See page 2-6
III

Tested according to:

EN 55014-1:2006/A2:2011
EN 55014-2:1997/A2:2008

The product was tested on a voluntary basis and complies with the essential requirements. The certification mark shown above can be affixed on the product. It is not permitted to alter the certification mark in any way. In addition the certification holder must not transfer the certificate to third parties. See also notes overleaf.

Test report no.:

647100834630

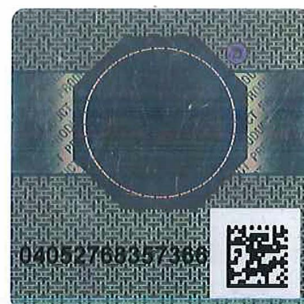
Valid until:

2017-01-14

Date, 2016-03-09

(Tony Liu)

Page 1 of 6





Product Service

CERTIFICATE

No. Z2 16 03 56640 165

Item No.	Model name	Rated voltage
1	EB1001	3V, CR2032
2	EB1002	3V, CR2032
3	EB1003	3V, CR2032
4	EB1004	3V, CR2032
5	EB1004H	9V,6F22
6	EB3571S	3V, CR2032
7	EB3571W	3V, CR2032
8	EB5001	3V, CR2032
9	EB6011	3V, CR2032
10	EB6571	3V, CR2032
11	EB6671	3V, CR2032
12	EB727	3V, CR2032
13	EB8671	3V, CR2032
14	EB8875H	9V,6F22
15	EB9001	3V, CR2032
16	EB9001D	3V, CR2032
17	EB9002	3V, CR2032
18	EB9002P	3V, CR2032
19	EB9004	3V, CR2032
20	EB9003L	3V, CR2032
21	EB9005L	3V, CR2032
22	EB9009	3V, CR2032
23	EB9010	3V, CR2032
24	EB9471	3V, CR2032
25	EB9771	3V, CR2032
26	EB9871	3V, CR2032
27	EB9005	3V, CR2032
28	EB9006	3V, CR2032
29	EB9008	3V, CR2032
30	EB9008H	3V,2*AAA
31	EB9011	3V, CR2032
32	EB9101	3V,2*AAA for main body
		3V,2*AAA for remote controller
33	EB9271	3V, CR2032
34	EB9012	3V, CR2032
35	EB9012H	3V,2*AAA
36	EB9272H	3V,2*AAA
37	EB9312	3V, CR2032
38	EB9313	3V, CR2032
39	EB9320	3V, CR2032
40	EB9321	3V, CR2032
41	EB9322	3V, CR2032
42	EB9323	3V, CR2032
43	EB9371	3V, CR2032
44	EB9671	3V, CR2032
45	EB9971	3V, CR2032
46	EB9971H	3V,2*AAA

Page 2 of 6



Product Service

C E R T I F I C A T E

No. Z2 16 03 56640 165

47	EB9013	3V, CR2032
48	EB9013L	3V, CR2032
49	EB9014	3V, CR2032
50	EB9015	3V, CR2032
51	EB9016	3V, CR2032
52	EB9017	3V, CR2032
53	EB9018	3V, CR2032
54	EB9019	3V, CR2032
55	EB9020	3V, CR2032
56	EB9021	3V, CR2032
57	EB9030	3V, CR2032
58	EB9031H	6V,4*AAA
59	EB9313H	3V,2*AAA
60	EB9872	3V, CR2032
61	EB9332	3V, CR2032
62	EB9325	3V, CR2032
63	EB9332H	3V,2*AAA
64	EB9320H	3V,2*AAA
65	EB9321H	3V,2*AAA
66	EB9322H	3V,2*AAA
67	EB9323H	3V,2*AAA
68	EB4012	3V, CR2032
69	EB4011	3V, CR2032
70	EB9314	3V, CR2032
71	EB9103	6V,4*AAA
72	EB9103H	6V,4*AAA
73	EB9318	3V, CR2032
74	EB7001	3V, CR2032
75	EB7001H	3V,2*AAA
76	EB9321V	4.5V,3*AAA
77	EB9326V	4.5V,3*AAA
78	EB9302	3V, CR2032
79	EB9341	3V, CR2032
80	EB9341H	3V,2*AAA
81	EB9032	3V, CR2032
82	EB9032H	3V,2*AAA
83	EB9342	3V, CR2032
84	EB9342H	3V,2*AAA
85	EB9553	3V,2*AAA
86	EB9D01	3V, CR2032
87	EB9552	3V,2*AAA
88	EB9505	3V,2*AAA
89	EB9505H	3V,2*AAA
90	EB7002	3V,2*AAA
91	EB9033	3V,CR2032
92	EB9327	3V,2*AAA
93	EB9328	3V,2*AAA
94	EB9554	3V,2*AAA

Page 3 of 6



Product Service

C E R T I F I C A T E

No. Z2 16 03 56640 165

95	EB9600	Solar power supply
96	EB9601	Solar power supply
97	EB9602	Solar power supply
98	EB9111	3V, CR2032 for main body
		3V, CR2032 for Remote controller
99	EB9121	3V, CR2032 for main body
		3V, CR2032 for Remote controller
100	EB9061	3V, CR2032
101	EB9554A	3V, 2*AAA
102	EB9339	3V, CR2032
103	EB9062	3V, CR2032
104	EB9373	3V, CR2032
105	EB9374	3V, CR2032
106	EB9506	3V, 2*AAA
107	EB9143	3V, 2*AAA for main body
		3V, 2*AAA for Remote controller
108	EB9132	3V, 2*AAA for main body
		3V, 2*AAA for Remote controller
109	EB9321AH	3V, 2*AAA
110	EB4021	3V, CR2032
111	EB9301	3V, CR2032
112	EB9063	3V, CR2032
113	EB9064	3V, CR2032
114	EB9151	3V, CR2032 for main body
		3V, CR2032 for Remote controller
115	EB7003	3V, 2*AAA
116	EB9032	3V, CR2032
117	EB9032H	3V, 2*AAA
118	EB9335	3V, CR2032
119	EB7004	3V, 2*AAA
120	EB9971	3V, CR2032
121	EB9971H	3V, 2*AAA
122	EB9510	3V, 2*AAA
123	EB9154	3V, CR2032 for main body
		3V, CR2032 for Remote controller
124	EB9350	3V, CR2032
125	EB9352	3V, CR2032
126	EB9353	3V, CR2032
127	EB1005	3V, CR2032
128	EB1006	3V, CR2032
129	EB9376	3V, CR2032
130	EB9380	3V, 2*AAA
131	EB9380H	3V, 2*AAA
132	EB9382	3V, 2*AAA
133	EB9382H	3V, 2*AAA
134	EB9383	3V, 2*AAA
135	EB9383H	3V, 2*AAA
136	EB9384	3V, 2*AAA

Page 4 of 6



Product Service

C E R T I F I C A T E

No. Z2 16 03 56640 165

137	EB9384H	3V,2*AAA
138	EB7006	3V,2*AAA
139	EB7006H	3V,2*AAA
140	EB9388	3V,2*AAA
141	EB9388H	3V,2*AAA
142	EB9385H	3V,2*AAA
143	EB7005	3V,2*AAA
144	EB7005H	3V,2*AAA
145	EB9570	3V,2*AAA
146	EB3110	3V,2*AAA
147	EB3110H	3V,2*AAA
148	EB7006W	3V,2*AAA
149	EB7003W	3V,2*AAA
150	EB9345	3V,2*AAA
151	EB9345H	3V,2*AAA
152	EB9401	3V,2*AAA
153	EB9401H	3V,2*AAA
154	EB4030H	3V,2*AAA
155	EB9410	3V,2*AAA
156	EB9410H	3V,2*AAA
157	EB9440H	3V,2*AAA
158	EB9063	3V, CR2032
159	EB9064	3V, CR2032
160	EB9415	3V,2*AAA
161	EB9415H	3V,2*AAA
162	EB9480	3V,2*AAA
163	EB7009	3V,2*AAA
164	EB7009H	3V,2*AAA
165	EB9411	3V,2*AAA
166	EB9416	3V,2*AAA
167	EB9603	3V,2*AAA
168	EB9483	3V,2*AAA
169	EB9003	3V,2*AAA
170	EB9300	3V,2*AAA
171	EB9014	3V,2*AAA
172	EB9313	3V,2*AAA or 1*CR2032
173	EB7008	3V,2*AAA
174	EB7008H	3V,2*AAA
175	EB9430	3V,2*AAA
176	EB9430H	3V,2*AAA
177	EB9360	3V, CR2032
178	EB9361	3V, CR2032
179	EB9362	3V, CR2032
180	EB9370	3V, CR2032
181	EB9371	3V, CR2032
182	EB9372	3V, CR2032
183	EB9373	3V, CR2032
184	EB9374	3V, CR2032

Page 5 of 6



Product Service

C E R T I F I C A T E

No. Z2 16 03 56640 165

185	EB9376	3V, CR2032
186	EB9365	3V,2*AAA
187	EB9365H	3V,2*AAA
188	EB9367	3V,2*AAA
189	EB9367H	3V,2*AAA
190	EB9375	3V, CR2032
191	EB9377	3V, CR2032
192	EB9390	3V,2*AAA
193	EB9390H	3V,2*AAA
194	EB9040	3V,2*AAA
195	EB9040H	3V,2*AAA
196	EB7030	3V,2*AAA
197	EB7030H	3V,2*AAA
198	EB9068	3V,2*AAA
199	EB9520	3V,2*AAA
200	EB9520H	3V,2*AAA
201	EB9040A	3V,2*AAA
202	EB7007	3V,2*AAA
203	EB7007H	3V,2*AAA
204	EB9420H	3V,2*AAA
205	EB9540	3V,2*AAA
206	EB9540H	3V,2*AAA
207	EB9065	3V,2*AAA
208	EB9065H	3V,2*AAA

-End-

Test report no.: 647100834630

Date, 2016-03-09

Page 6 of 6



Product Service

Attestation of Conformity

No. E8A 16 03 56640 166

Holder of Certificate:

Allegre & Söhne GmbH & Co. KG
 Röhrengasse 10
 4020 Linz
 Austria

Name of Object:

Person scales
(Electronic personal scales)

Model(s):

EB1001, EB1002, EB1003, EB1004
EB1004H, EB3571S, EB3571W, EB5001,
etc. (See page 2-6 for models details)

Description of Object:

Rated voltage: See page 2-6
 Protection class: III

Tested according to:

EN 55014-1:2006/A2:2011
 EN 55014-2:1997/A2:2008

This Attestation of Conformity is issued on a voluntary basis according to the Directive 2014/30/EU relating to electromagnetic compatibility. It confirms that the listed apparatus complies with all essential requirements of the directive and is based on the technical specifications applicable at the time of issuance. It refers only to the particular sample submitted for testing and certification. See also notes overleaf.

Test report no.:

647100834630



Date, 2016-03-09

(Tony Liu)



After preparation of the necessary technical documentation as well as the EU declaration of conformity the required CE marking can be affixed on the product. That declaration of conformity is issued under the sole responsibility of the manufacturer. Other relevant EU-directives have to be observed.



Product Service

Attestation of Conformity

No. E8A 16 03 56640 166

Item No.	Model name	Rated voltage
1	EB1001	3V, CR2032
2	EB1002	3V, CR2032
3	EB1003	3V, CR2032
4	EB1004	3V, CR2032
5	EB1004H	9V,6F22
6	EB3571S	3V, CR2032
7	EB3571W	3V, CR2032
8	EB5001	3V, CR2032
9	EB6011	3V, CR2032
10	EB6571	3V, CR2032
11	EB6671	3V, CR2032
12	EB727	3V, CR2032
13	EB8671	3V, CR2032
14	EB8875H	9V,6F22
15	EB9001	3V, CR2032
16	EB9001D	3V, CR2032
17	EB9002	3V, CR2032
18	EB9002P	3V, CR2032
19	EB9004	3V, CR2032
20	EB9003L	3V, CR2032
21	EB9005L	3V, CR2032
22	EB9009	3V, CR2032
23	EB9010	3V, CR2032
24	EB9471	3V, CR2032
25	EB9771	3V, CR2032
26	EB9871	3V, CR2032
27	EB9005	3V, CR2032
28	EB9006	3V, CR2032
29	EB9008	3V, CR2032
30	EB9008H	3V,2*AAA
31	EB9011	3V, CR2032
32	EB9101	3V,2*AAA for main body 3V,2*AAA for remote controller
33	EB9271	3V, CR2032
34	EB9012	3V, CR2032
35	EB9012H	3V,2*AAA
36	EB9272H	3V,2*AAA
37	EB9312	3V, CR2032
38	EB9313	3V, CR2032
39	EB9320	3V, CR2032
40	EB9321	3V, CR2032
41	EB9322	3V, CR2032
42	EB9323	3V, CR2032
43	EB9371	3V, CR2032
44	EB9671	3V, CR2032
45	EB9971	3V, CR2032
46	EB9971H	3V,2*AAA

Page 2 of 6



Product Service

Attestation of Conformity

No. E8A 16 03 56640 166

47	EB9013	3V, CR2032
48	EB9013L	3V, CR2032
49	EB9014	3V, CR2032
50	EB9015	3V, CR2032
51	EB9016	3V, CR2032
52	EB9017	3V, CR2032
53	EB9018	3V, CR2032
54	EB9019	3V, CR2032
55	EB9020	3V, CR2032
56	EB9021	3V, CR2032
57	EB9030	3V, CR2032
58	EB9031H	6V,4*AAA
59	EB9313H	3V,2*AAA
60	EB9872	3V, CR2032
61	EB9332	3V, CR2032
62	EB9325	3V, CR2032
63	EB9332H	3V,2*AAA
64	EB9320H	3V,2*AAA
65	EB9321H	3V,2*AAA
66	EB9322H	3V,2*AAA
67	EB9323H	3V,2*AAA
68	EB4012	3V, CR2032
69	EB4011	3V, CR2032
70	EB9314	3V, CR2032
71	EB9103	6V,4*AAA
72	EB9103H	6V,4*AAA
73	EB9318	3V, CR2032
74	EB7001	3V, CR2032
75	EB7001H	3V,2*AAA
76	EB9321V	4.5V,3*AAA
77	EB9326V	4.5V,3*AAA
78	EB9302	3V, CR2032
79	EB9341	3V, CR2032
80	EB9341H	3V,2*AAA
81	EB9032	3V, CR2032
82	EB9032H	3V,2*AAA
83	EB9342	3V, CR2032
84	EB9342H	3V,2*AAA
85	EB9553	3V,2*AAA
86	EB9D01	3V, CR2032
87	EB9552	3V,2*AAA
88	EB9505	3V,2*AAA
89	EB9505H	3V,2*AAA
90	EB7002	3V,2*AAA
91	EB9033	3V,CR2032
92	EB9327	3V,2*AAA
93	EB9328	3V,2*AAA
94	EB9554	3V,2*AAA

Page 3 of 6



Product Service

Attestation of Conformity

No. E8A 16 03 56640 166

95	EB9600	Solar power supply
96	EB9601	Solar power supply
97	EB9602	Solar power supply
98	EB9111	3V, CR2032 for main body
		3V, CR2032 for Remote controller
99	EB9121	3V, CR2032 for main body
		3V, CR2032 for Remote controller
100	EB9061	3V, CR2032
101	EB9554A	3V, 2*AAA
102	EB9339	3V, CR2032
103	EB9062	3V, CR2032
104	EB9373	3V, CR2032
105	EB9374	3V, CR2032
106	EB9506	3V, 2*AAA
107	EB9143	3V, 2*AAA for main body
		3V, 2*AAA for Remote controller
108	EB9132	3V, 2*AAA for main body
		3V, 2*AAA for Remote controller
109	EB9321AH	3V, 2*AAA
110	EB4021	3V, CR2032
111	EB9301	3V, CR2032
112	EB9063	3V, CR2032
113	EB9064	3V, CR2032
114	EB9151	3V, CR2032 for main body
		3V, CR2032 for Remote controller
115	EB7003	3V, 2*AAA
116	EB9032	3V, CR2032
117	EB9032H	3V, 2*AAA
118	EB9335	3V, CR2032
119	EB7004	3V, 2*AAA
120	EB9971	3V, CR2032
121	EB9971H	3V, 2*AAA
122	EB9510	3V, 2*AAA
123	EB9154	3V, CR2032 for main body
		3V, CR2032 for Remote controller
124	EB9350	3V, CR2032
125	EB9352	3V, CR2032
126	EB9353	3V, CR2032
127	EB1005	3V, CR2032
128	EB1006	3V, CR2032
129	EB9376	3V, CR2032
130	EB9380	3V, 2*AAA
131	EB9380H	3V, 2*AAA
132	EB9382	3V, 2*AAA
133	EB9382H	3V, 2*AAA
134	EB9383	3V, 2*AAA
135	EB9383H	3V, 2*AAA
136	EB9384	3V, 2*AAA

Page 4 of 6



Product Service

Attestation of Conformity

No. E8A 16 03 56640 166

137	EB9384H	3V,2*AAA
138	EB7006	3V,2*AAA
139	EB7006H	3V,2*AAA
140	EB9388	3V,2*AAA
141	EB9388H	3V,2*AAA
142	EB9385H	3V,2*AAA
143	EB7005	3V,2*AAA
144	EB7005H	3V,2*AAA
145	EB9570	3V,2*AAA
146	EB3110	3V,2*AAA
147	EB3110H	3V,2*AAA
148	EB7006W	3V,2*AAA
149	EB7003W	3V,2*AAA
150	EB9345	3V,2*AAA
151	EB9345H	3V,2*AAA
152	EB9401	3V,2*AAA
153	EB9401H	3V,2*AAA
154	EB4030H	3V,2*AAA
155	EB9410	3V,2*AAA
156	EB9410H	3V,2*AAA
157	EB9440H	3V,2*AAA
158	EB9063	3V, CR2032
159	EB9064	3V, CR2032
160	EB9415	3V,2*AAA
161	EB9415H	3V,2*AAA
162	EB9480	3V,2*AAA
163	EB7009	3V,2*AAA
164	EB7009H	3V,2*AAA
165	EB9411	3V,2*AAA
166	EB9416	3V,2*AAA
167	EB9603	3V,2*AAA
168	EB9483	3V,2*AAA
169	EB9003	3V,2*AAA
170	EB9300	3V,2*AAA
171	EB9014	3V,2*AAA
172	EB9313	3V,2*AAA or 1*CR2032
173	EB7008	3V,2*AAA
174	EB7008H	3V,2*AAA
175	EB9430	3V,2*AAA
176	EB9430H	3V,2*AAA
177	EB9360	3V, CR2032
178	EB9361	3V, CR2032
179	EB9362	3V, CR2032
180	EB9370	3V, CR2032
181	EB9371	3V, CR2032
182	EB9372	3V, CR2032
183	EB9373	3V, CR2032
184	EB9374	3V, CR2032

Page 5 of 6



Product Service

Attestation of Conformity

No. E8A 16 03 56640 166

185	EB9376	3V, CR2032
186	EB9365	3V,2*AAA
187	EB9365H	3V,2*AAA
188	EB9367	3V,2*AAA
189	EB9367H	3V,2*AAA
190	EB9375	3V, CR2032
191	EB9377	3V, CR2032
192	EB9390	3V,2*AAA
193	EB9390H	3V,2*AAA
194	EB9040	3V,2*AAA
195	EB9040H	3V,2*AAA
196	EB7030	3V,2*AAA
197	EB7030H	3V,2*AAA
198	EB9068	3V,2*AAA
199	EB9520	3V,2*AAA
200	EB9520H	3V,2*AAA
201	EB9040A	3V,2*AAA
202	EB7007	3V,2*AAA
203	EB7007H	3V,2*AAA
204	EB9420H	3V,2*AAA
205	EB9540	3V,2*AAA
206	EB9540H	3V,2*AAA
207	EB9065	3V,2*AAA
208	EB9065H	3V,2*AAA

Test report no.: 647100834630

Date, 2016-03-09

Page 6 of 6